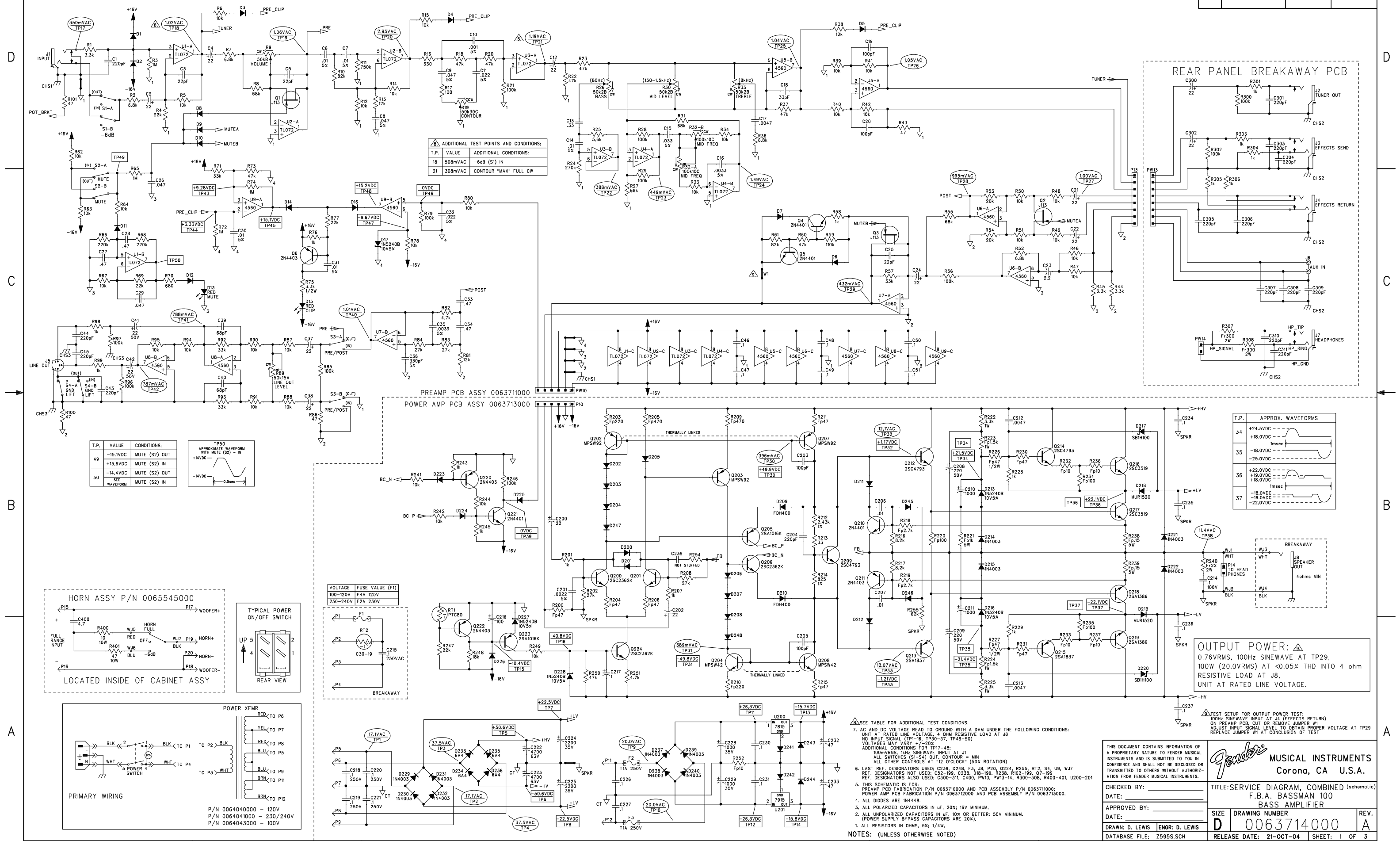


REVISIONS			
REV.	DESCRIPTION	DATE	APPROVED
A	PR 595	21-OCT-04	dBL



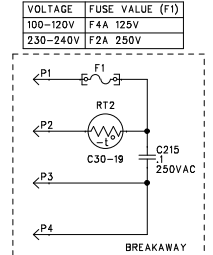
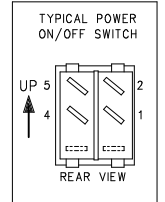
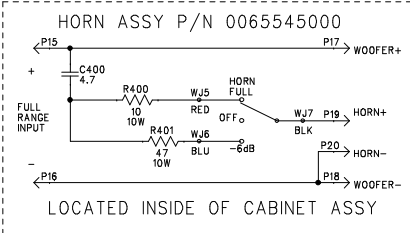
▲ ADDITIONAL TEST POINTS AND CONDITIONS:

T.P.	VALUE	ADDITIONAL CONDITIONS:
18	508mVAC	-6dB (S1) IN
21	308mVAC	CONTOUR "MAX" FULL CW

T.P.	VALUE	CONDITIONS:
49	-15.1VDC	MUTE (S2) OUT
	+15.6VDC	MUTE (S2) IN
50	-14.4VDC	MUTE (S2) OUT
	SEE WAVEFORM	MUTE (S2) IN

TP50 APPROXIMATE WAVEFORM WITH MUTE (S2) - IN  
-14VDC - 0.5sec

T.P.	APPROX. WAVEFORMS
34	+24.5VDC
	+18.0VDC
35	-18.0VDC
	-25.0VDC
36	+22.0VDC
	+18.0VDC
37	-18.0VDC
	-19.0VDC
	-22.0VDC



**OUTPUT POWER:** ▲  
0.76VRMS, 100Hz SINEWAVE AT TP29,  
100W (20.0VRMS) AT <0.05% THD INTO 4 ohm  
RESISTIVE LOAD AT J8,  
UNIT AT RATED LINE VOLTAGE.

- ▲ SEE TABLE FOR ADDITIONAL TEST CONDITIONS.
- AC AND DC VOLTAGE READ TO GROUND WITH A DVM UNDER THE FOLLOWING CONDITIONS:  
UNIT AT RATED LINE VOLTAGE, 4 OHM RESISTIVE LOAD AT J8  
NO INPUT SIGNAL (TP1-16, TP30-37, TP49-50)  
VOLTAGES MAY VARY +/-20%  
ADDITIONAL CONDITIONS FOR TP17-48:  
100mVRMS, 1kHz SINEWAVE INPUT AT J1  
ALL SWITCHES (S1-S4) OUT, CONTOUR = MIN  
REF. DESIGNATORS ALSO USED: C300-31, C400, PW10, PW13-14, R300-308, R400-401, U200-201
  - THIS SCHEMATIC IS FOR:  
PREAMP PCB FABRICATION P/N 0063710000 AND PCB ASSEMBLY P/N 0063710000;  
POWER AMP PCB FABRICATION P/N 0063710000 AND PCB ASSEMBLY P/N 0063710000.
  - ALL DIODES ARE 1N4448.
  - ALL POLARIZED CAPACITORS IN uF, 20% 16V MINIMUM.  
2. ALL UNPOLARIZED CAPACITORS IN uF, 10K OR BETTER; 50V MINIMUM.  
(POWER SUPPLY BYPASS CAPACITORS ARE 20%).
  - ALL RESISTORS IN OHMS, 5% 1/4W.
- NOTES: (UNLESS OTHERWISE NOTED)

THIS DOCUMENT CONTAINS INFORMATION OF A PROPRIETARY NATURE TO FENDER MUSICAL INSTRUMENTS AND IS SUBMITTED TO YOU IN CONFERENCE AND SHALL NOT BE DISCLOSED OR TRANSMITTED TO OTHERS WITHOUT AUTHORIZATION FROM FENDER MUSICAL INSTRUMENTS.

**Fender** MUSICAL INSTRUMENTS  
Corona, CA U.S.A.

CHECKED BY: \_\_\_\_\_  
DATE: \_\_\_\_\_  
APPROVED BY: \_\_\_\_\_  
DATE: \_\_\_\_\_  
DRAWN: D. LEWIS ENGR: D. LEWIS  
DATABASE FILE: Z595S.SCH

TITLE: SERVICE DIAGRAM, COMBINED (schematic)  
F.B.A. BASSMAN 100  
BASS AMPLIFIER

SIZE DRAWING NUMBER  
D 0063714000  
REV. A

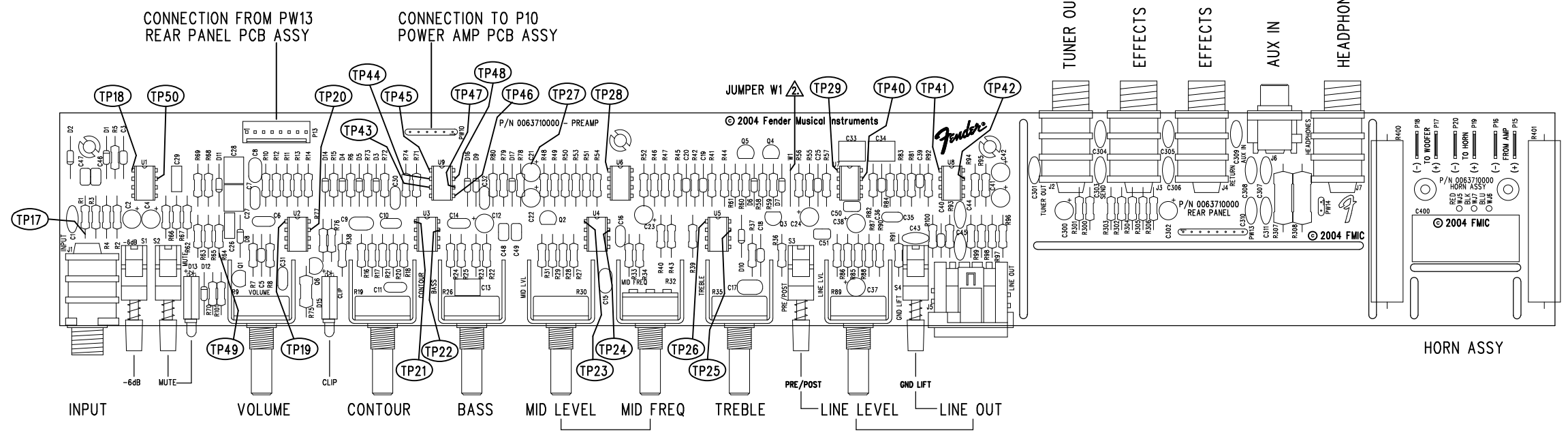
RELEASE DATE: 21-OCT-04 SHEET: 1 OF 3

8 7 6 5 4 3 2 1

REVISIONS			
REV.	DESCRIPTION	DATE	APPROVED
A	PR 595	21-OCT-04	dBL

D  
C  
B  
A

D  
C  
B  
A



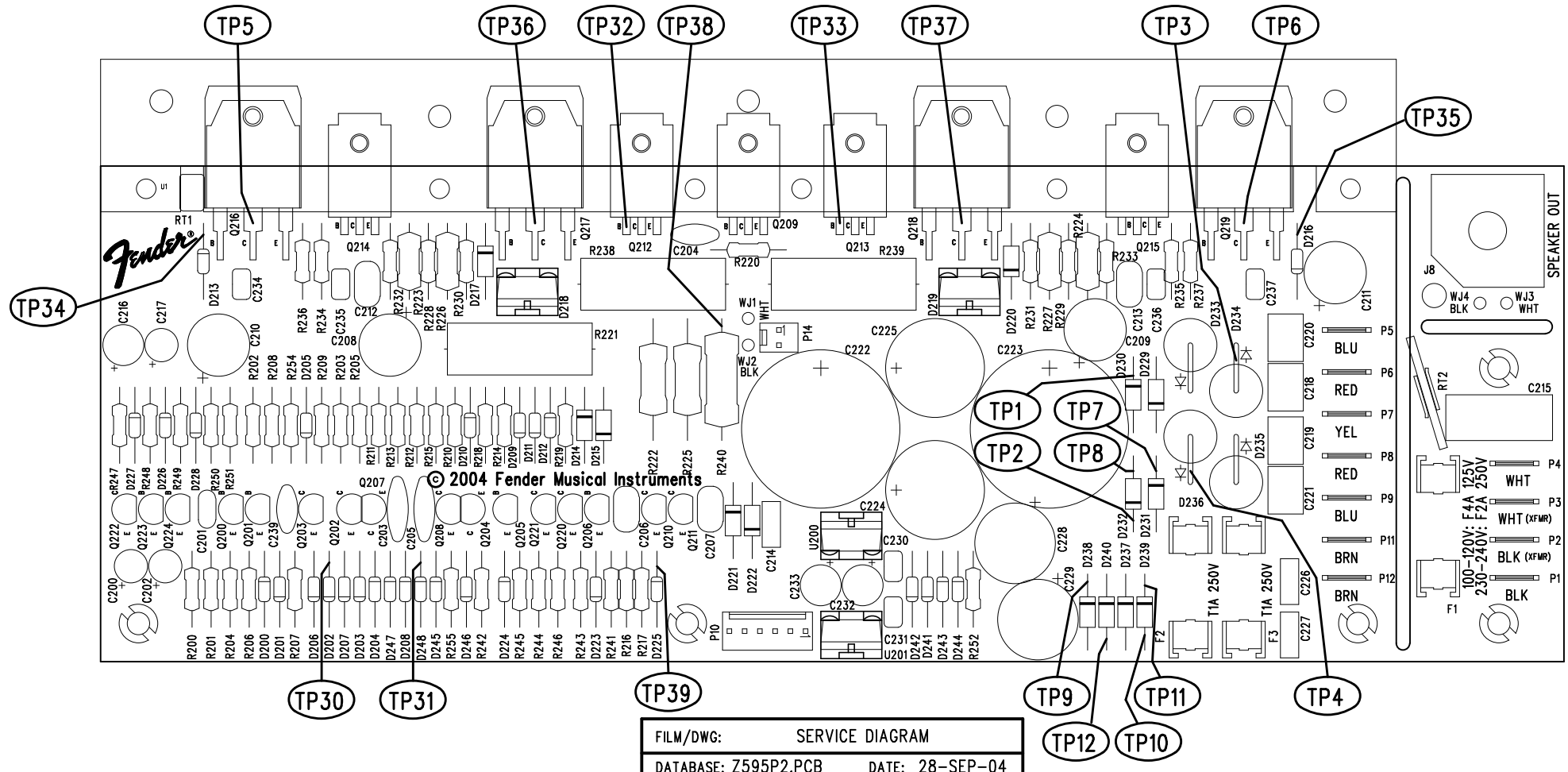
FILM/DWG: SERVICE DIAGRAM  
 DATABASE: Z595P1.PCB DATE: 28-SEP-04

THIS DOCUMENT CONTAINS INFORMATION OF A PROPRIETARY NATURE TO FENDER MUSICAL INSTRUMENTS AND IS SUBMITTED TO YOU IN CONFIDENCE AND SHALL NOT BE DISCLOSED OR TRANSMITTED TO OTHERS WITHOUT AUTHORIZATION FROM FENDER MUSICAL INSTRUMENTS.		MUSICAL INSTRUMENTS Corona, CA U.S.A.	
CHECKED BY: _____	TITLE: SERVICE DIAGRAM, COMBINED (PCB assy) F.B.A. BASSMAN 100 PREAMP		
DATE: _____	SIZE <b>C</b>	DRAWING NUMBER 0063714000	REV. <b>A</b>
APPROVED BY: _____	DATE: _____		
DRAWN: D. LEWIS	ENGR: D. LEWIS	RELEASE DATE: 21-OCT-04	SHEET 2 OF 3
DATABASE FILE: Z595P1.PCB			


△ REFER TO SHEET 1 FOR OUTPUT TEST SETUP.  
 1. SEE SHEET 1 FOR PRIMARY WIRING, TEST CONDITIONS, AND TEST POINT VALUES.  
 NOTES: (UNLESS OTHERWISE NOTED)

8 7 6 5 4 3 2 1

REVISIONS			
REV.	DESCRIPTION	DATE	APPROVED
A	PR 595	21-OCT-04	dBL



2. COMPONENTS NOT STUFFED: C239, R254.  
 1. SEE SHEET 1 FOR PRIMARY WIRING, TEST CONDITIONS,  
 TEST POINT VALUES, AND OUTPUT TEST SETUP.  
 NOTES: (UNLESS OTHERWISE NOTED)

THIS DOCUMENT CONTAINS INFORMATION OF A PROPRIETARY NATURE TO FENDER MUSICAL INSTRUMENTS AND IS SUBMITTED TO YOU IN CONFIDENCE AND SHALL NOT BE DISCLOSED OR TRANSMITTED TO OTHERS WITHOUT AUTHORIZATION FROM FENDER MUSICAL INSTRUMENTS.		 <b>MUSICAL INSTRUMENTS</b> Corona, CA U.S.A.	
CHECKED BY: _____ DATE: _____		<b>TITLE: SERVICE DIAGRAM, COMBINED (PCB assy)</b> <b>F.B.A. BASSMAN 100</b> <b>POWER AMPLIFIER</b>	
APPROVED BY: _____ DATE: _____			
DRAWN: D. LEWIS ENGR: D. LEWIS	DATABASE FILE: Z595P2.PCB	SIZE <b>B</b> DRAWING NUMBER <b>0063714000</b>	REV. <b>A</b>
RELEASE DATE: 21-OCT-04		SHEET 3 OF 3	